



The Arc of Light

Sudeep Mehta

sudeepm@itm.edu

ITM Skills University Institute of
Design and Media, Mumbai,
Maharashtra

Arman Shaikh

armana.2226n@itm.edu

ITM Skills University Institute of
Design and Media, Mumbai,
Maharashtra

Prajwal Patil

prajwald.2226n@itm.edu

ITM Skills University Institute of
Design and Media, Mumbai,
Maharashtra

ABSTRACT

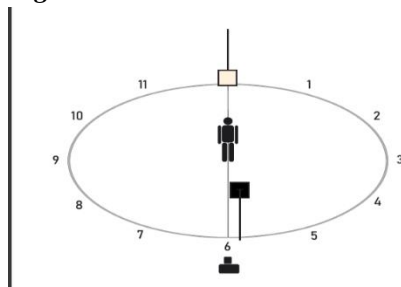
The interplay of light and shadow is a fundamental element in the art of photography. By understanding how light behaves from every angle, photographers can harness its potential to create compelling and evocative images. This research, The Arc of Light: A Study of Shadows and Faces, delves into this intricate relationship, offering a comprehensive visual exploration of the transformative power of illumination. To systematically investigate the effects of light on a subject, we employed a rigorous methodology. A subject was captured from a constant angle while the light source was incrementally adjusted, allowing us to observe the subtle shifts in form, texture, and mood. To ensure accurate measurement and control of light intensity, a light meter was utilized throughout the process. By quantifying the amount of light falling on the subject, we were able to analyze its impact on the resulting image with precision. Through this meticulous study, we have gained valuable insights into the nuances of directional light, the character of shadows, and the evocative potential of light and shadow. By examining how light illuminates, obscures and redefines the subject, we can better understand the principles that govern the art of illumination. This knowledge empowers photographers to make informed decisions about lighting setups, camera angles, and exposure settings, ultimately leading to more creative and impactful imagery. This research serves as a valuable resource for photographers, artists, and enthusiasts seeking to master the art of illumination. By studying the principles and techniques outlined within these pages, readers can elevate their photographic practice and create visually stunning images that resonate with viewers. Whether you are a seasoned photographer or a budding enthusiast, The Arc of Light offers a wealth of knowledge and inspiration to help you unlock the full potential of light and shadow.

Keywords: Light Research, Photography, Artificial Light, Strobe Light, Flash-Light, Looks, Lights, Shadows, Studio Photography, Portrait

THE ARC OF LIGHT

A Study of Shadows and Faces, is a foundational guide for photographers, artists, and enthusiasts seeking to deepen their comprehension of light and shadow. Through a meticulously crafted series of photographs, we systematically study how light moves around a subject in 360 degrees. Each image captures the subject from a constant perspective, while the light shifts incrementally, creating a visual map of highlights, shadows, textures, and tones.

Figure 1



12 Low - 6 High

Image 1.1



Light Intensity
1 : 1

Image 1.2



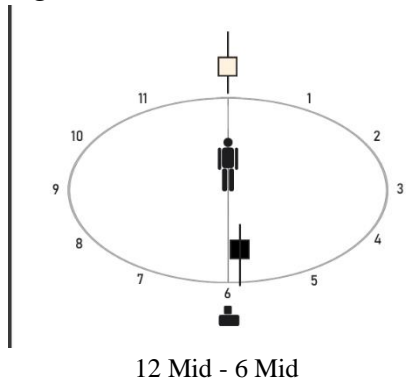
Light Intensity
1 : 1/2

Image 1.3



Light Intensity
1 : 0

Figure 2



12 Mid - 6 Mid

Image 2.1



Light Intensity
1 : 1

Image 2.2



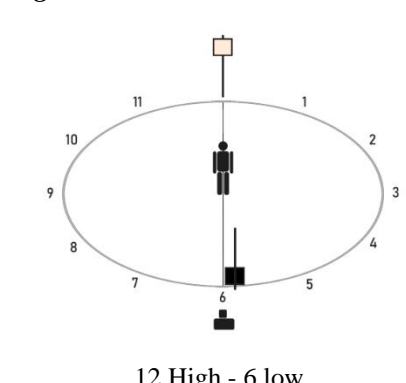
Light Intensity
1 : 1/2

Image 2.3



Light Intensity
1 : 0

Figure 3



12 High - 6 low

Image 3.1



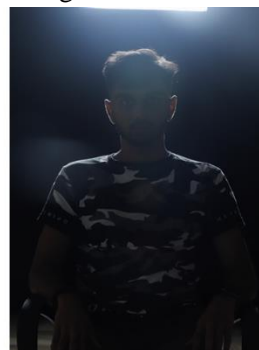
Light Intensity
1 : 1

Image 3.2



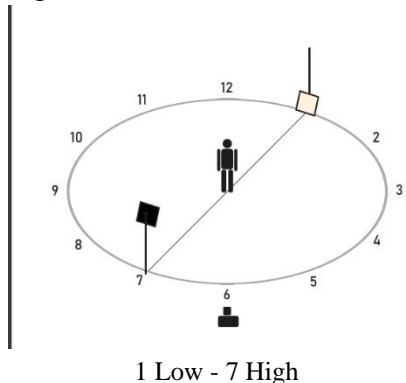
Light Intensity
1 : 1/2

Image 3.3



Light Intensity
1 : 0

Figure 4



1 Low - 7 High

Image 4.1



Light Intensity
1 : 1

Image 4.2



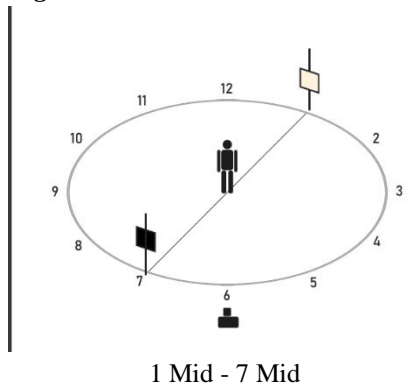
Light Intensity
1 : 1/2

Image 4.3



Light Intensity
1 : 0

Figure 5



1 Mid - 7 Mid

Image 5.1



Light Intensity
1 : 1

Image 5.2



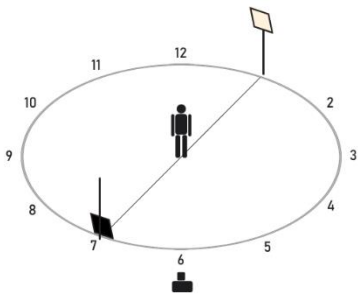
Light Intensity
1 : 1/2

Image 5.3



Light Intensity
1 : 0

Figure 6



1 High - 7 Low

Image 6.1



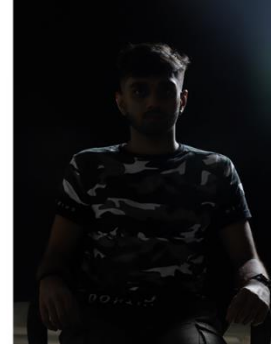
Light Intensity
1 : 1

Image 6.2



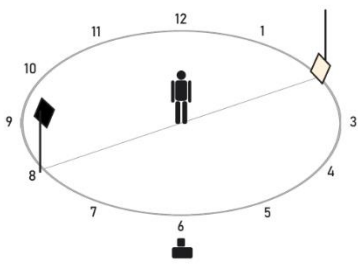
Light Intensity
1 : 1/2

Image 6.3



Light Intensity
1 : 0

Figure 7



2 Low - 8 High

Image 7.1



Light Intensity
1 : 1

Image 7.2



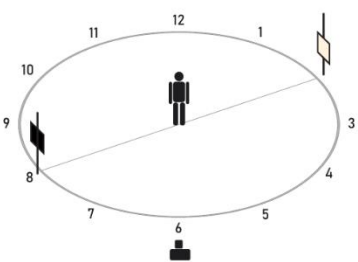
Light Intensity
1 : 1/2

Image 7.3



Light Intensity
1 : 0

Figure 8



2 Mid - 8 Mid

Image 8.1



Light Intensity
1 : 1

Image 8.2



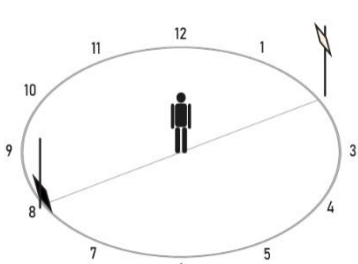
Light Intensity
1 : 1/2

Image 8.3



Light Intensity
1 : 0

Figure 9



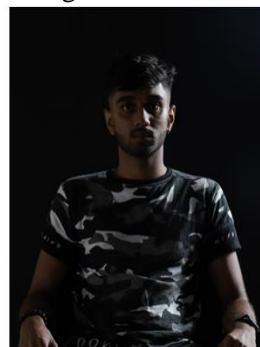
2 High - 8 Low

Image 9.1



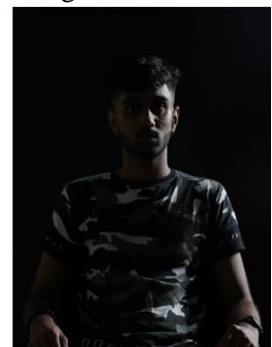
Light Intensity
1 : 1

Image 9.2



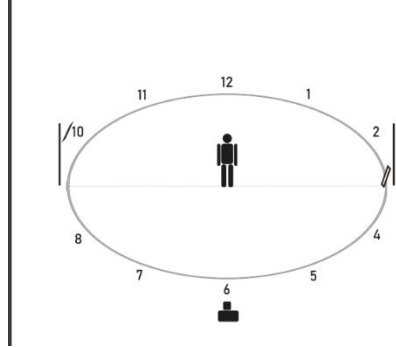
Light Intensity
1 : 1/2

Image 9.3



Light Intensity
1 : 0

Figure 10



3 Low - 8 High

Image 10.1



Light Intensity
1 : 1

Image 10.2



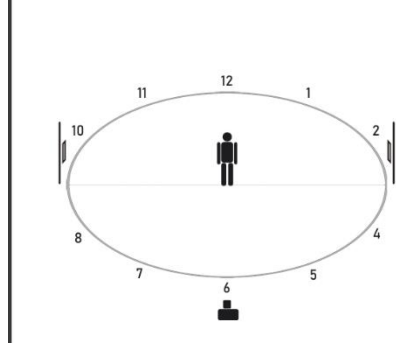
Light Intensity
1 : 1/2

Image 10.3



Light Intensity
1 : 0

Figure 11



3 Mid - 8 Mid

Image 11.1



Light Intensity
1 : 1

Image 11.2



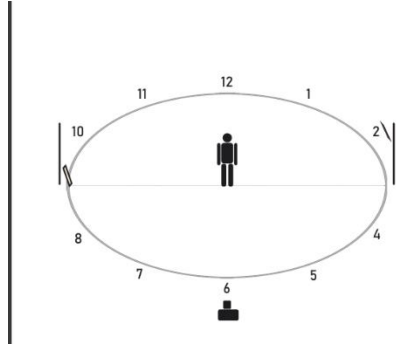
Light Intensity
1 : 1/2

Image 11.3



Light Intensity
1 : 0

Figure 12



3 High - 8 Low

Image 12.1



Light Intensity
1 : 1

Image 12.2



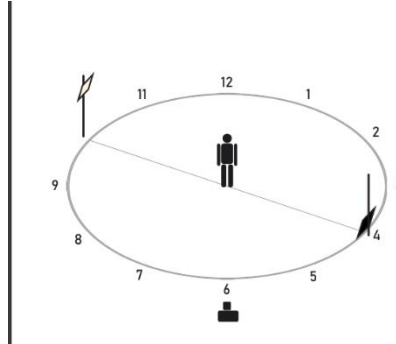
Light Intensity
1 : 1/2

Image 12.3



Light Intensity
1 : 0

Figure 13



4 Low - 10 High

Image 13.1



Light Intensity
1 : 1

Image 13.2



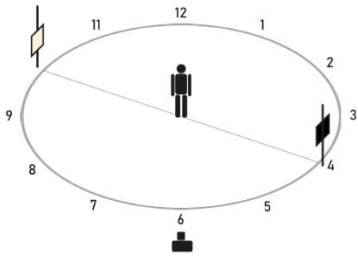
Light Intensity
1 : 1/2

Image 13.3



Light Intensity
1 : 0

Figure 14



4 Mid - 10 Mid

Image 14.1



Light Intensity
1 : 1

Image 14.2



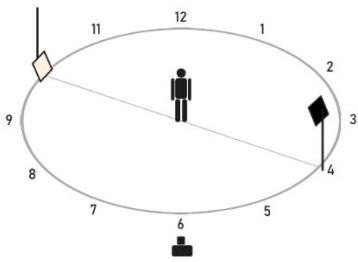
Light Intensity
1 : 1/2

Image 14.3



Light Intensity
1 : 0

Figure 15



4 High - 10 Low

Image 15.1



Light Intensity
1 : 1

Image 15.2



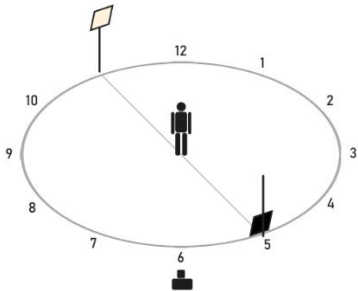
Light Intensity
1 : 1/2

Image 15.3



Light Intensity
1 : 0

Figure 16



5 Low - 11 High

Image 16.1



Light Intensity
1 : 1

Image 16.2



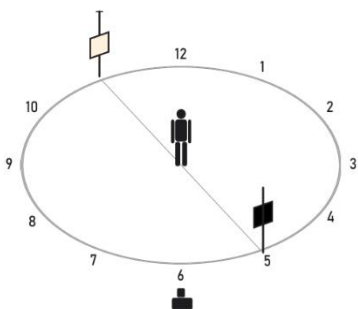
Light Intensity
1 : 1/2

Image 16.3



Light Intensity
1 : 0

Figure 17



5 Mid - 11 Mid

Image 17.1



Light Intensity
1 : 1

Image 17.2



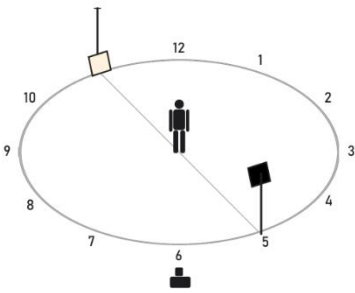
Light Intensity
1 : 1/2

Image 17.3



Light Intensity
1 : 0

Figure 18



5 High - 1 Low

Image 18.1



Light Intensity
1 : 1

Image 18.2



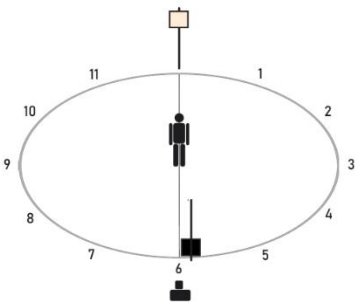
Light Intensity
1 : 1/2

Image 18.3



Light Intensity
1 : 0

Figure 19



6 Low - 12 High

Image 19.1



Light Intensity
1 : 1

Image 19.2



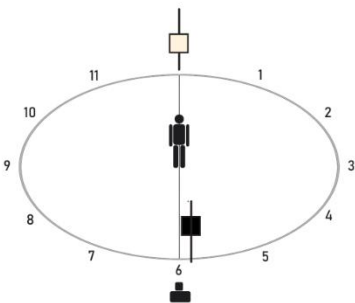
Light Intensity
1 : 1/2

Image 19.3



Light Intensity
1 : 0

Figure 20



6 Mid - 12 Mid

Image 20.1



Light Intensity
1 : 1

Image 20.2



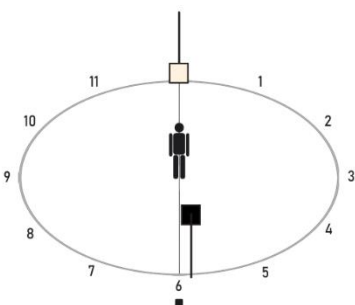
Light Intensity
1 : 1/2

Image 20.3



Light Intensity
1 : 0

Figure 21



6 High - 12 Low

Image 21.1



Light Intensity
1 : 1

Image 21.2



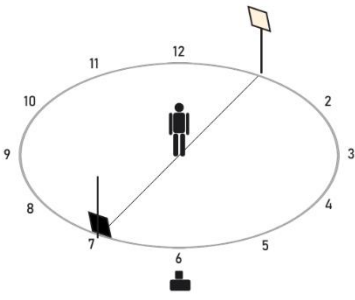
Light Intensity
1 : 1/2

Image 21.3



Light Intensity
1 : 0

Figure 22



7 Low - 1 High

Image 22.1



Light Intensity
1 : 1

Image 22.2



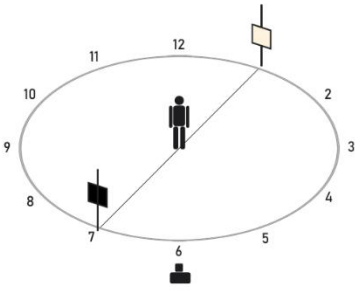
Light Intensity
1 : 1/2

Image 22.3



Light Intensity
1 : 0

Figure 23



7 Mid - 1 Mid

Image 23.1



Light Intensity
1 : 1

Image 23.2



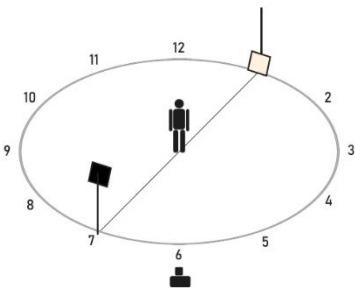
Light Intensity
1 : 1/2

Image 23.3



Light Intensity
1 : 0

Figure 24



7 High - 1 Low

Image 24.1



Light Intensity
1 : 1

Image 24.2



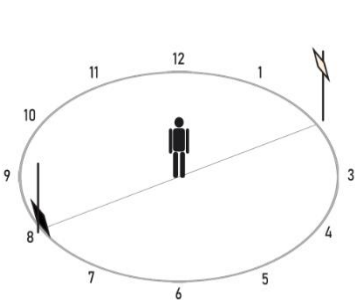
Light Intensity
1 : 1/2

Image 24.3



Light Intensity
1 : 0

Figure 25



8 Low - 2 High

Image 25.1



Light Intensity
1 : 1

Image 25.2



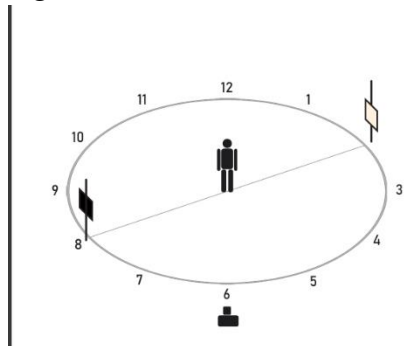
Light Intensity
1 : 1/2

Image 25.3



Light Intensity
1 : 0

Figure 26



8 Mid - 2 Mid

Image 26.1



Light Intensity
1 : 1

Image 26.2



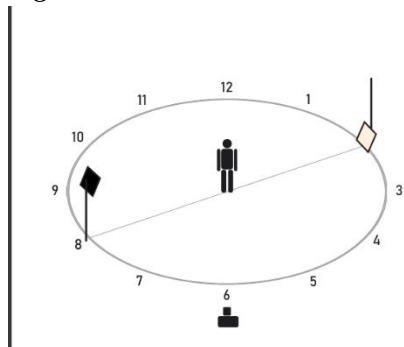
Light Intensity
1 : 1/2

Image 26.3



Light Intensity
1 : 0

Figure 27



8 High - 2 Low

Image 27.1



Light Intensity
1 : 1

Image 27.2



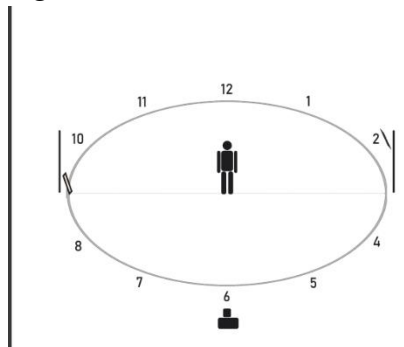
Light Intensity
1 : 1/2

Image 27.3



Light Intensity
1 : 0

Figure 28



9 Low - 3 High

Image 28.1



Light Intensity
1 : 1

Image 28.2



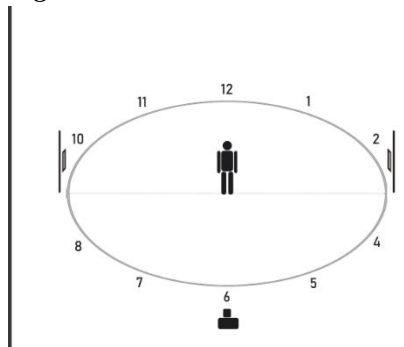
Light Intensity
1 : 1/2

Image 28.3



Light Intensity
1 : 0

Figure 29



9 Mid - 3 Mid

Image 29.1



Light Intensity
1 : 1

Image 29.2



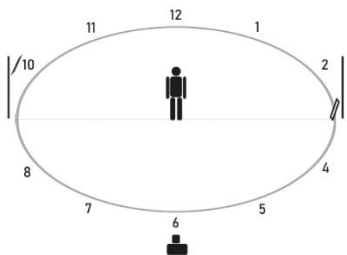
Light Intensity
1 : 1/2

Image 29.3



Light Intensity
1 : 0

Figure 30



9 High - 3 Low

Image 30.1



Light Intensity
1 : 1

Image 30.2



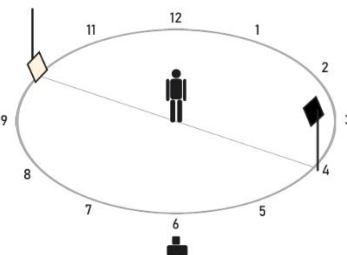
Light Intensity
1 : 1/2

Image 30.3



Light Intensity
1 : 0

Figure 31



10 Low - 4 High

Image 31.1



Light Intensity
1 : 1

Image 31.2



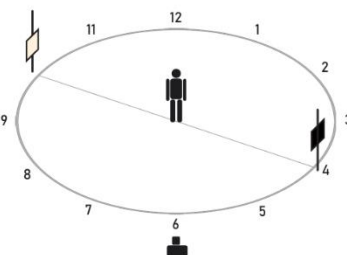
Light Intensity
1 : 1/2

Image 31.3



Light Intensity
1 : 0

Figure 32



10 Mid - 4 Mid

Image 32.1



Light Intensity
1 : 1

Image 32.2



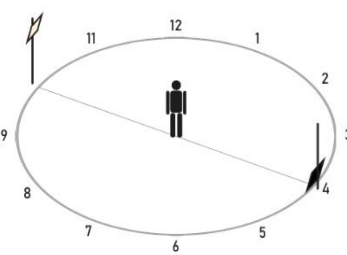
Light Intensity
1 : 1/2

Image 32.3



Light Intensity
1 : 0

Figure 33



10 High - 4 Low

Image 33.1



Light Intensity
1 : 1

Image 33.2



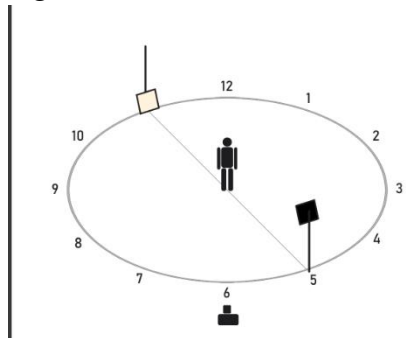
Light Intensity
1 : 1/2

Image 33.3



Light Intensity
1 : 0

Figure 34



11 Low - 5 High

Image 34.1



Light Intensity
1 : 1

Image 34.2



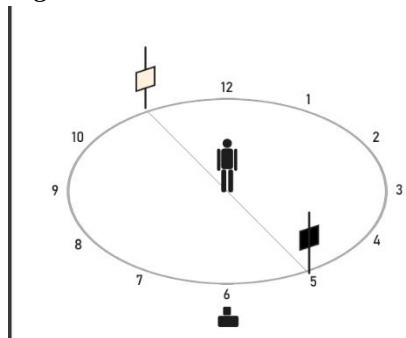
Light Intensity
1 : 1/2

Image 34.3



Light Intensity
1 : 0

Figure 35



11 Mid - 5 Mid

Image 35.1



Light Intensity
1 : 1

Image 35.2



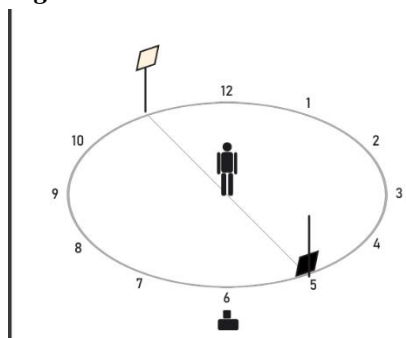
Light Intensity
1 : 1/2

Image 35.3



Light Intensity
1 : 0

Figure 36



11 High - 5 Low

Image 36.1



Light Intensity
1 : 1

Image 36.2



Light Intensity
1 : 1/2

Image 36.3



Light Intensity
1 : 0

CONCLUSION

The journey through the arc of light has unveiled the intricate dance between light and shadow, revealing the transformative power of illumination. By systematically capturing a subject from a constant angle and employing a light meter to ensure precise light measurement, we have gained a profound understanding of how light shapes, defines, and reveals the essence of a subject. This research serves as a visual guide to unlocking the secrets of light, inspiring creativity and elevating your photographic practice. By studying the principles and techniques outlined within these pages, readers can harness the potential of light to craft compelling and evocative images that resonate with viewers.

ACKNOWLEDGEMENT

Creating The Arc of Light has been a journey of exploration, collaboration, and profound learning. This endeavor would not have been possible without the invaluable support of numerous individuals and institutions who contributed their time, expertise, and encouragement.

First and foremost, we extend our heartfelt gratitude to our model, Vedant Potdar, for his patience, dedication, and professionalism, and to our incredible assistants, Aayan and Yash, for their unwavering commitment and hard work.

A special acknowledgment goes to our college, ITM Skills University Institute of Design and Media, Mumbai, for providing the resources, guidance, and encouragement necessary to transform this idea into reality. We would also like to express our gratitude to mentor Sudeep Mehta, for his invaluable insights and guidance throughout this project.

Finally, to everyone who contributed their time, skills, and enthusiasm to this endeavor.

REFERENCES

- [1] Veronika Stampfl, Helena Gabrijelcic and Jure Ahtik, "The Role of Light and Shadow in the Perception of Photographs", Portal of Croatian Scientific and Professional Journals – HRCAK, Technical Gazatta, Vol. 30 No. 4 (2023), <https://hrcak.srce.hr/en/305501>.
- [2] "Why Use a Light Meter?", Art of the Portrait, accessed November 20, 2024 at <https://www.artoftheportrait.co.uk/why-use-a-light-meter>.
- [3] Hector Rivera, "Light, Shadows and Attitude, Basic Elements of Photography?", Academia, accessed November 20, 2024 at https://www.academia.edu/11534716/Light_Shadows_and_Attitude_Basic_Elements_of_Photography.