



# INTERNATIONAL JOURNAL OF ADVANCE RESEARCH, IDEAS AND INNOVATIONS IN TECHNOLOGY

ISSN: 2454-132X

Impact factor: 6.078

(Volume 6, Issue 2)

Available online at: [www.ijariit.com](http://www.ijariit.com)

## Age vs. Travel

Dishan Gosar

[dishangosar007@gmail.com](mailto:dishangosar007@gmail.com)

NMIMS Anil Surendra Modi School of Commerce, Mumbai, Maharashtra

### ABSTRACT

We often believe that as a person grows older, he/she starts losing interest in travelling out of town and going on adventurous trips due to health issues or any such reason. Hence, I decided to conduct a survey to understand the relation between age of a person and the frequency of travelling out of town in a year with the input of 500 people.

**Keywords**— Age, Frequency, Travel, Histogram, Correlation, Pie chart

### 1. INRODUCTION

Most of us like to travel, visit new places, and learn different cultures. Staying with new people and learning about their lifestyle is what brings us joy. We just get mesmerized by thought of going for a trip and getting a break from our daily routine, maybe weekend getaways or during vacations. However, some believe that as a person grows old, he/she loses interest in travelling. As a matter of fact, they do not even like moving out of their homes. This may later lead to feeling lonely and going into depression as not going anywhere and staying home cuts you off from the outside world. Hence, we will use the responses of 500 people to find out the relation and if it comes out to be positive then a solution to such a problem is required.

### 2. OBJECTIVES

- 1) To find the relation between age of a person and the frequency of travelling out of town in a year.
- 2) If there is a positive relation existing, then to suggest a suitable solution
- 3) To get views from different people regarding this through a survey.

### 3. DATA

Table 1: Data

Serial No.	Age 15 – 30 (x Variable)	Frequency of travelling out of town in one year (y Variable)
1	22	4
2	15	0
3	25	13
4	27	12
5	22	0
6	22	11
7	21	4
8	20	3
9	20	11
10	20	2
11	30	2
12	16	8
13	27	3
14	29	5
15	23	7
16	17	4
17	15	1
18	27	10
19	29	3
20	27	9
21	20	0

22	29	0
23	19	13
24	27	7
25	30	8
26	27	4
27	30	0
28	21	5
29	18	15
30	29	11
31	30	11
32	25	7
33	25	7
34	25	1
35	18	1
36	18	9
37	27	9
38	22	12
39	23	11
40	23	6
41	25	7
42	18	14
43	28	13
44	17	13
45	29	4
46	18	7
47	19	6
48	26	0
49	30	11
50	25	4
51	15	5
52	19	8
53	20	4
54	25	11
55	18	5
56	30	4
57	30	12
58	17	10
59	25	3
60	30	6
61	24	10
62	25	8
63	29	14
64	23	13
65	26	1
66	25	0
67	25	7
68	22	6
69	23	14
70	23	11
71	29	7
72	30	2
73	21	12
74	19	5
75	27	3
76	19	2
77	29	12
78	22	5
79	21	13
80	19	5
81	24	1
82	16	13
83	26	2
84	30	10
85	30	6
86	18	10
87	15	1
88	24	6
89	16	1
90	20	9
91	21	0

92	26	10
93	17	13
94	26	13
95	18	5
96	23	9
97	17	12
98	30	2
99	15	4
100	24	4
101	15	4
102	15	7
103	29	14
104	26	4
105	27	3
106	30	1
107	29	13
108	24	5
109	21	14
110	25	0
111	15	7
112	24	15
113	21	14
114	25	7
115	26	6
116	20	14
117	29	12
118	29	15
119	23	1
120	24	8
121	25	4
122	20	2
123	27	1
124	17	1
125	16	14
126	26	13
127	20	5
128	18	1
129	23	8
130	25	5
131	25	5
132	15	12
133	17	2
134	19	4
135	22	3
136	28	10
137	23	9
138	22	0
139	24	5
140	25	11
141	16	1
142	29	11
143	20	13
144	28	7
145	25	3
146	23	5
147	16	13
148	25	13
149	15	8
150	19	5
151	29	8
152	24	6
153	15	8
154	28	14
155	18	5
156	19	5
157	29	5
158	28	10
159	15	10
160	15	9
161	26	12

162	29	6
163	24	2
164	16	7
165	26	11
166	17	3
167	30	7
168	17	5
169	16	3
170	30	1
171	30	9
172	26	1
173	28	5
174	30	13
175	20	10
176	30	9
177	29	2
178	18	10
179	24	14
180	29	15
181	22	2
182	15	1
183	19	10
184	24	14
185	27	8
186	21	11
187	25	0
188	21	14
189	17	12
190	22	9
191	29	9
192	28	11
193	20	5
194	22	15
195	23	3
196	17	10
197	23	14
198	25	9
199	23	7
200	15	7
201	15	7
202	15	12
203	20	4
204	29	15
205	23	1
206	15	5
207	21	5
208	29	10
209	21	12
210	28	8
211	24	12
212	28	6
213	28	6
214	27	6
215	26	15
216	20	1
217	20	1
218	16	9
219	23	7
220	16	8
221	15	6
222	25	1
223	28	6
224	24	6
225	24	2
226	27	11
227	17	8
228	19	9
229	28	6
230	28	12
231	25	9

232	28	12
233	24	0
234	26	8
235	30	15
236	23	7
237	27	1
238	18	0
239	17	1
240	18	10
241	17	3
242	26	8
243	18	10
244	19	7
245	24	11
246	22	3
247	28	4
248	20	15
249	19	11
250	25	13
251	16	7
252	18	13
253	22	6
254	21	11
255	20	6
256	21	1
257	28	13
258	29	3
259	28	9
260	28	12
261	20	11
262	23	14
263	24	12
264	20	1
265	22	10
266	27	10
267	22	14
268	20	0
269	22	10
270	22	14
271	22	9
272	25	1
273	18	8
274	22	8
275	22	0
276	15	2
277	20	0
278	19	11
279	26	13
280	24	5
281	17	1
282	18	10
283	23	5
284	18	11
285	19	13
286	15	11
287	28	14
288	16	15
289	16	5
290	28	10
291	22	10
292	23	11
293	17	9
294	24	9
295	21	10
296	30	4
297	26	3
298	27	6
299	29	7
300	15	12
301	27	0

302	25	10
303	23	13
304	20	0
305	22	6
306	24	15
307	16	0
308	24	15
309	18	13
310	17	15
311	19	8
312	22	4
313	28	13
314	23	2
315	21	4
316	22	6
317	30	8
318	30	3
319	25	2
320	28	1
321	15	0
322	25	10
323	28	3
324	16	3
325	23	9
326	17	9
327	28	3
328	19	14
329	28	12
330	28	11
331	15	8
332	29	12
333	22	4
334	15	3
335	30	5
336	27	11
337	28	12
338	27	12
339	27	14
340	28	6
341	17	13
342	16	2
343	28	11
344	19	3
345	27	13
346	28	9
347	25	13
348	18	4
349	26	5
350	18	7
351	17	5
352	28	8
353	26	9
354	15	10
355	30	1
356	20	2
357	20	9
358	21	15
359	15	15
360	25	15
361	30	3
362	28	9
363	17	13
364	29	10
365	25	7
366	23	4
367	29	9
368	20	1
369	24	0
370	30	8
371	24	7

372	28	5
373	21	12
374	24	1
375	23	14
376	17	14
377	24	12
378	19	3
379	18	8
380	29	8
381	17	4
382	16	4
383	26	12
384	22	13
385	30	6
386	28	15
387	23	8
388	23	7
389	16	9
390	22	0
391	28	11
392	23	6
393	15	13
394	20	8
395	16	12
396	28	3
397	24	10
398	16	7
399	20	1
400	17	10
401	29	2
402	20	13
403	16	8
404	23	7
405	30	3
406	30	0
407	28	1
408	28	3
409	28	5
410	30	1
411	26	8
412	22	6
413	21	13
414	21	4
415	21	11
416	18	13
417	15	10
418	20	7
419	16	5
420	17	2
421	21	0
422	15	14
423	19	3
424	16	6
425	19	3
426	21	5
427	19	5
428	25	1
429	25	14
430	19	14
431	15	2
432	28	0
433	18	13
434	28	10
435	27	11
436	22	15
437	27	14
438	21	3
439	15	9
440	23	10
441	21	6

442	23	2
443	19	4
444	27	7
445	23	3
446	19	11
447	16	6
448	27	11
449	23	5
450	16	8
451	25	12
452	22	9
453	24	4
454	24	10
455	16	3
456	29	9
457	20	13
458	29	11
459	28	7
460	29	4
461	23	11
462	21	13
463	23	0
464	29	12
465	27	11
466	21	7
467	27	6
468	18	13
469	25	5
470	28	3
471	15	15
472	17	0
473	22	7
474	26	5
475	26	5
476	21	14
477	23	6
478	30	14
479	24	0
480	19	11
481	28	6
482	21	12
483	29	3
484	19	8
485	15	4
486	19	15
487	19	8
488	28	2
489	27	7
490	20	9
491	17	3
492	25	5
493	17	10
494	15	9
495	19	8
496	23	11
497	29	2
498	19	11
499	29	7
500	25	7

#### 4. ANALYSIS

Correlation:

	<i>Age</i>	<i>Frequency</i>
Age	1	
Frequency	0.006274	1

Interpretation:

There exists a positive correlation between Age and Frequency

Thus, Age and Frequency of travelling out of town in a year are directly related.

Thus, Age and Frequency of travelling out of town in a year are directly related.



5. REGRESSION

Coefficients	
Intercept	7.274177527
Age	0.005970219

a	=	7.274177527	=	7.274
b	=	0.005970219	=	0.006

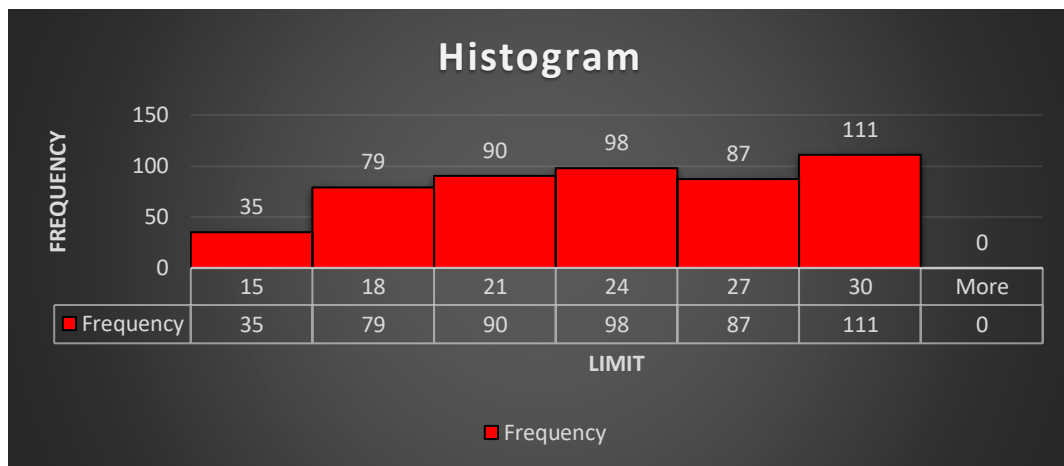
Since,  $Y = a + bx$

Therefore,  $Y = 7.274 + 0.006x$

If the age of the person increases by 0.006 years then the times, he travels out of town will increase by 1 time

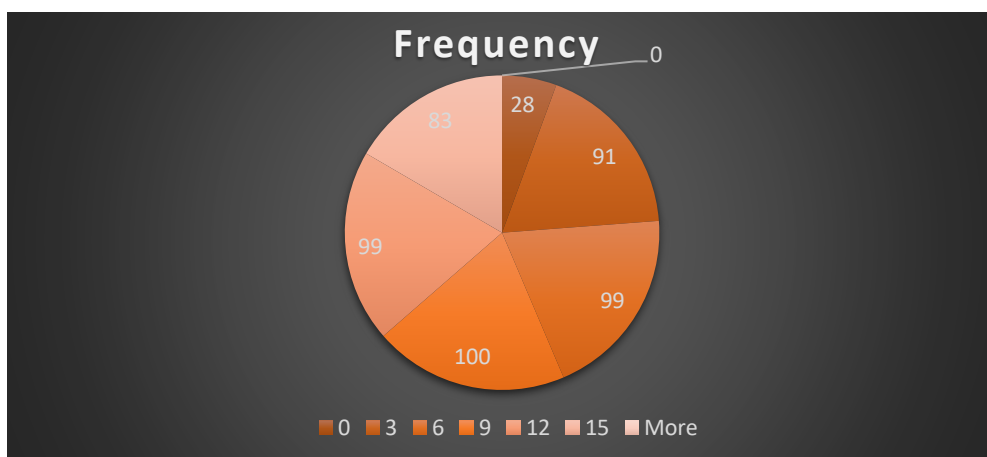
HISTOGRAM

Age			
Reference Range	Limit	Limit	Frequency
15-18	15	15	35
18-21	18	18	79
21-24	21	21	90
24-27	24	24	98
27-30	27	27	87
	30	30	111
		More	0



Frequency Pie Chart

How Frequently do you travel out of town in a year			
Reference Range	Limit	Limit	Frequency
0-3	0	0	28
3-6	3	3	91
6-9	6	6	99
9-12	9	9	100
12-15	12	12	99
	15	15	83
		More	0



From the above given data, we calculated the correlation and it comes out to be 0.006274. This shows there exists Positive Weak Correlation between Age and frequency of travelling out of town in a year. It means there is a negligible relation between the two. From the above Histogram and Pie Chart we understand that: Out of 500 people, 111 people are aged between 27 to 30 years and their frequency of travel is 20% of the highest total trips of an individual in a year.

### 6. CONCLUSION

By conducting this survey, we got various responses from different aged people giving their frequency of travelling out of town in one year which ranged from 0 to 15 times. Thus, we can conclude this research paper by saying that there may not be any relation between the age of a person and the frequency of him/her traveling out of town in a year. This is backed by weak positive correlation between the two.

### 7. BIBLIOGRAPHY

Self-conducted survey

